



GIVING TUESDAY



Happy Giving Tuesday!

Today, you have the power to improve the lives of people with disabilities all across the State of Maryland!

Here's the important part...

**We need
your help!**



This year, our goal is to raise \$5,000 to provide food and essential services for people with disabilities.

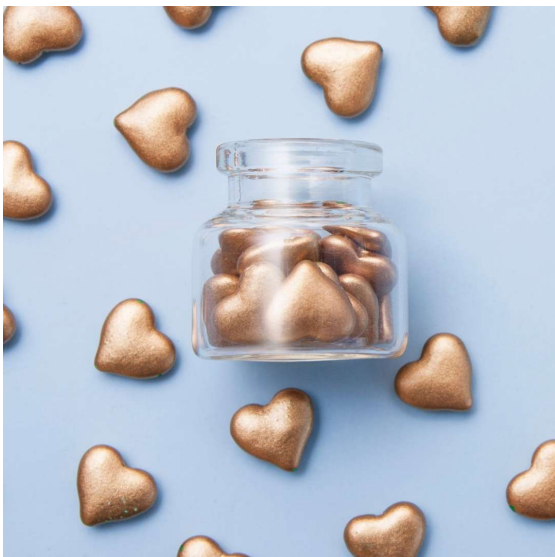


Donations for the
17th Annual Food & Toy Drive

Your monetary donation will help us fill holiday baskets with food, toys, gloves, hats, scarves, and books for deserving families.

Will you please donate today so we can ease the burden of disabled people this holiday season? A gift of \$25 or \$50 will mean so much!

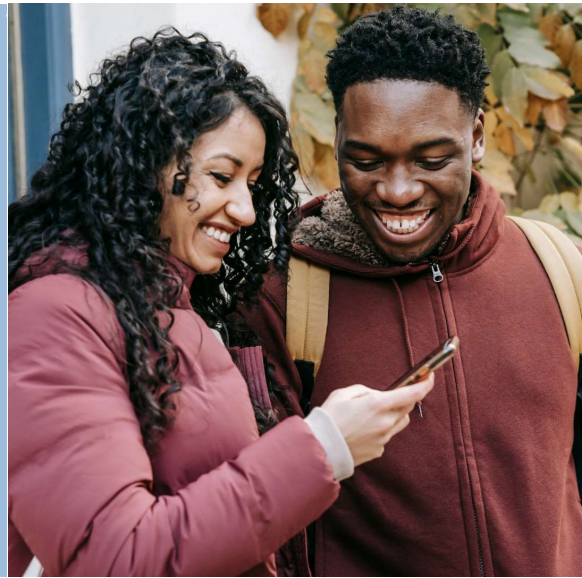
Be apart of this generous movement and support MCC! Here is how you can help:



Donate!
[Click to donate](#)

Spread the word!

Tell your friends and family why you believe in MCC and encourage them to support us too! If everyone can bring one additional gift to the table, we can double our impact!



This could be the most powerful and meaningful gift you give this year. From the bottom of our hearts, thank you for caring!

Donate Now



Maryland Community Connection | 4401 Nicole Drive, Lanham, MD 20706

[Unsubscribe ksnyder@marylandcommunityconnection.org](mailto:ksnyder@marylandcommunityconnection.org)

[Update Profile](#) | [Constant Contact Data Notice](#)

Sent by news@marylandcommunityconnection.org powered by



Try email marketing for free today!